

**RXFP2 Antibody (C-term)**  
**Affinity Purified Rabbit Polyclonal Antibody (Pab)**  
**Catalog # AP18991b**

**Specification**

---

**RXFP2 Antibody (C-term) - Product Information**

Application	WB,E
Primary Accession	<a href="#">O8WXD0</a>
Other Accession	<a href="#">NP_570718.1</a>
Reactivity	Human
Host	Rabbit
Clonality	Polyclonal
Isotype	Rabbit IgG
Calculated MW	86453
Antigen Region	692-721

**RXFP2 Antibody (C-term) - Additional Information**

**Gene ID** 122042

**Other Names**

Relaxin receptor 2, G-protein coupled receptor 106, G-protein coupled receptor affecting testicular descent, Leucine-rich repeat-containing G-protein coupled receptor 8, Relaxin family peptide receptor 2, RXFP2, GPR106, GREAT, LGR8

**Target/Specificity**

This RXFP2 antibody is generated from rabbits immunized with a KLH conjugated synthetic peptide between 692-721 amino acids from the C-terminal region of human RXFP2.

**Dilution**

WB~~1:1000

E~~Use at an assay dependent concentration.

**Format**

Purified polyclonal antibody supplied in PBS with 0.09% (W/V) sodium azide. This antibody is purified through a protein A column, followed by peptide affinity purification.

**Storage**

Maintain refrigerated at 2-8°C for up to 2 weeks. For long term storage store at -20°C in small aliquots to prevent freeze-thaw cycles.

**Precautions**

RXFP2 Antibody (C-term) is for research use only and not for use in diagnostic or therapeutic procedures.

**RXFP2 Antibody (C-term) - Protein Information**

**Name** RXFP2

**Synonyms** GPR106, GREAT, LGR8

**Function** Receptor for relaxin. The activity of this receptor is mediated by G proteins leading to stimulation of adenylate cyclase and an increase of cAMP. May also be a receptor for Leydig insulin-like peptide (INSL3).

**Cellular Location**

Cell membrane; Multi-pass membrane protein.

**Tissue Location**

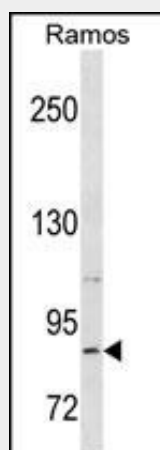
Expressed mainly in the brain, kidney, muscle, testis, thyroid, uterus, peripheral blood cells and bone marrow

**RXFP2 Antibody (C-term) - Protocols**

Provided below are standard protocols that you may find useful for product applications.

- [Western Blot](#)
- [Blocking Peptides](#)
- [Dot Blot](#)
- [Immunohistochemistry](#)
- [Immunofluorescence](#)
- [Immunoprecipitation](#)
- [Flow Cytometry](#)
- [Cell Culture](#)

**RXFP2 Antibody (C-term) - Images**



RXFP2 Antibody (C-term) (Cat. #AP18991b) western blot analysis in Ramos cell line lysates (35ug/lane). This demonstrates the RXFP2 antibody detected the RXFP2 protein (arrow).

**RXFP2 Antibody (C-term) - Background**

This gene encodes a member of the GPCR (G protein-coupled, 7-transmembrane receptor) family. Mutations in this gene are associated with cryptorchidism. Alternatively spliced transcript variants encoding different isoforms have been found for this gene.

**RXFP2 Antibody (C-term) - References**

Ars, E., et al. Int. J. Androl. (2010) In press :  
Ferlin, A., et al. Ann. N. Y. Acad. Sci. 1160, 215-218 (2009) :  
Ferlin, A., et al. Ann. N. Y. Acad. Sci. 1160, 213-214 (2009) :  
Feng, S., et al. Ann. N. Y. Acad. Sci. 1160, 197-204 (2009) :  
Scott, D.J., et al. Ann. N. Y. Acad. Sci. 1160, 74-77 (2009) :